

# ARCHITECTURAL DIGEST

THE INTERNATIONAL DESIGN AUTHORITY

JANUARY 2017

THE NEW

# AD100

Who's in, what's hot,  
and the most exciting  
design now

WOW FACTOR  
Spectacular spaces around the world

# AD100

This year's honorees—plus ten top tastemakers who have been elevated to the list's first-ever Hall of Fame—are the men and women who are changing our world, one room, one building, and one garden at a time.

Adjaye Associates	94	Décoration		Kemble Interiors	130	Pierre Yovanovitch		Stephen Shadley	
Aero Studios	110	Jacques Garcia	124	Laplace	126	Architecture d'Intérieur	126	Designs	134
Agence Charles Zana	124	Diller Scofidio + Renfro	94	Leroy Street Studio	107	Rafael de Cárdenas Ltd./		Stephen Sills	
Agence Louis Benech	146	Dimore Studio	140	Lorenzo Castillo	136	Architecture at Large	136	Associates	116
Alex Papachristidis		Drake/Anderson	144	M (Group)	112	Richard Keith		Steven Harris	
Interiors	128	Ferguson & Shamamian		Mark Cunningham Inc.	130	Langham Inc.	114	Architects	108
Alidad Ltd.	120	Architects	98	Mark Hampton LLC	112	Richard Mishaan		Steven Volpe Design	118
Arne Maynard Garden		Francis Sultana	120	Markham Roberts Inc.	130	Design	134	Studio Gang	96
Design Ltd.	146	François Catroux	124	Martyn Lawrence		Robert Couturier Inc.	126	Studio Peregalli	118
Ashe + Leandro	138	Frank de Biasi Interiors	116	Bullard Design	136	Robert Kime Design	122	Studio Sofield Inc.	118
Atelier AM	110	G. P. Schafer Architect	98	Michael Maltzan		Rockwell Group	142	Studioilse	122
Ben Pentreath Ltd.	138	Gachot Studios	140	Architecture	96	The Roger Thomas		Suzanne Kasler	
BIG -		Groves & Co.	112	Michael S. Smith Inc.	112	Collection	142	Interiors	114
Bjarke Ingels Group	94	Herzog & de Meuron	94	Miles Redd	144	Roman and Williams		Thad Hayes Inc.	118
Billhuber and		Ike Kligerman Barkley	98	Miranda Brooks		Buildings and Interiors	142	Tino Zervudachi	
Associates	110	India Mahdavi	140	Landscape Design	146	Rose Uniacke		& Associés	126
Brian J. McCarthy Inc.	128	Ingrao Inc.	136	Muriel Brandolini	144	Studio Ltd.	122	Tod Williams	
Carrier and Company		Isabel López-Quesada	128	Nicky Haslam		Ryan Korban	138	Billie Tsien Architects	108
Interiors	110	Jan Showers &		Studio Ltd.	120	S. R. Gambrel Inc.	144	Tom Scheerer Inc.	134
Commune	140	Associates Inc.	128	Olson Kundig	107	Sawyer   Berson	107	Toshiko Mori Architect	108
Cullman & Kravis Inc.	110	Jayne Design		OMA New York	96	Seldorf Architects	107	Tucker & Marks Inc.	114
Dan Fink Studio	138	Studio Inc.	112	Paolo Moschino for		Shawn Henderson		Veere Grenney	
Daniel Romualdez		Jean-Louis Deniot	124	Nicholas Haslam Ltd.	120	Interior Design	134	Associates	122
Architects	116	JP Molyneux		Paul Fortune Design		Shelton, Mindel &		Victoria Hagan	
Deborah Berke		Studio Ltd.	116	Studio	116	Associates	108	Interiors	114
Partners	107	Juan Montoya Design	130	Peter Pennoyer		Sig Bergamin Architecture		Waldo's Designs	118
Deborah Nevins &		Kelly Wearstler	136	Architects	98	& Design	144	William T. Georgis	
Associates	146					Snohetta	96	Architect	144
								Wirtz International	146

INTERIOR DESIGN

# British Invasion

England's leading lights

# AD100

### Alidad Ltd.

**STYLE:** "Elegant and opulent but also supremely comfortable," says Alidad Mahloudji.

**PROJECTS:** A Lisbon apartment, a Kuwait residence, a Cornwall country house.

**WHAT'S NEW:** Studio Alidad, a decorating division "where the projects tend to be less bespoke and more contemporary."

**KEY INFLUENCE:** "Sir Christopher Wren, who personified the 17th-century Baroque aesthetic which I so admire."

► [London; alidad.com](#)

### Francis Sultana

**STYLE:** "Sophisticated luxury built on noble materials, quality, and craftsmanship."

**PROJECTS:** An estate in rural Herefordshire, England; a Manhattan penthouse; a palazzo in Malta;

a San Francisco apartment. **COMING UP:** A book on David Gill, slated for fall.

**CLIENTS:** Madonna, Annie Lennox.

**FAVORITE HOTEL:** The Gritti Palace in Venice.

**FAVORITE RESTAURANT:** Loulou's in London.

**THE NEXT BIG THING:** Traditional techniques such as *pâte de verre*, marquetry, and *églomisé*.

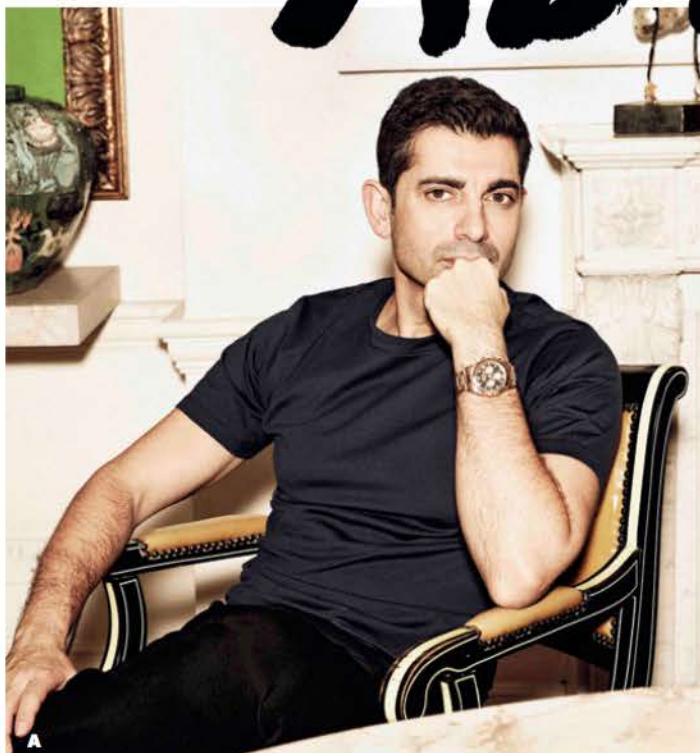
► [London; francissultana.com](#)

### Nicky Haslam Studio Ltd.

**PHILOSOPHY:** "Design is more to do with an intuitive eye and an inherent reaction to what looks right or wrong."

**PROJECTS:** "A tumbledown tower in the Welsh borders, a filigree-wood boathouse on Austria's Wörthersee."

**WHAT'S NEW:** A color collection for Paint the Town Green.



A. FRANCIS SULTANA. B. A LONDON TOWNHOUSE BY PAOLO MOSCHINO FOR NICHOLAS HASLAM LTD.

**COMING UP:** A fifth design book.

**KEY INFLUENCES:** Richard Mique, Sir Edwin Lutyens, Claude-Nicolas Ledoux.

**THE NEXT BIG THING:** "The return of glazed chintzes"

► [London; +44-77-1016-9700](#)

### Paolo Moschino for Nicholas Haslam Ltd.

**STYLE:** Sophisticated contemporary interiors, often with glossy surfaces, important art, and moody metallics.

**PROJECTS:** Seaside houses in Norway and the South of France, a penthouse in Miami.

**WHAT'S NEW:** *Signature Spaces: Well-Traveled Interiors* by Paolo Moschino & Philip Vergeylen (The Vendome Press, 2016).

**THE NEXT BIG THING:** "Confident clients who drive bolder, stronger design."

► [London; nicholashaslam.com](#)



FROM TOP: BILLAL TARICHT; GEMMA MILLER